

# ACT

## Outdoor water buffer for hot water and chilled water

50-75-95 L

The technical accumulation called ACT consists of a cylindrical tank in a horizontal position, available in three different capacities. The tank is thermally insulated so that it can operate with both hot and cold water and is equipped with hydraulic connections positioned in order to promote a homogeneous flow inside the entire tank. The ACT accumulation is closed with a supporting frame and with powder-coated metal sheet panels of the same colour as the i-32V5 series units. The supply includes both the fastening screws between the heat pump and the ACT chassis and the adjustable feet for levelling the assembly. Some accessories are available such as: different sizes of electrical resistors equipped with its own electrical panel, the expansion tank and the EXOGEL valve.



### Building Features

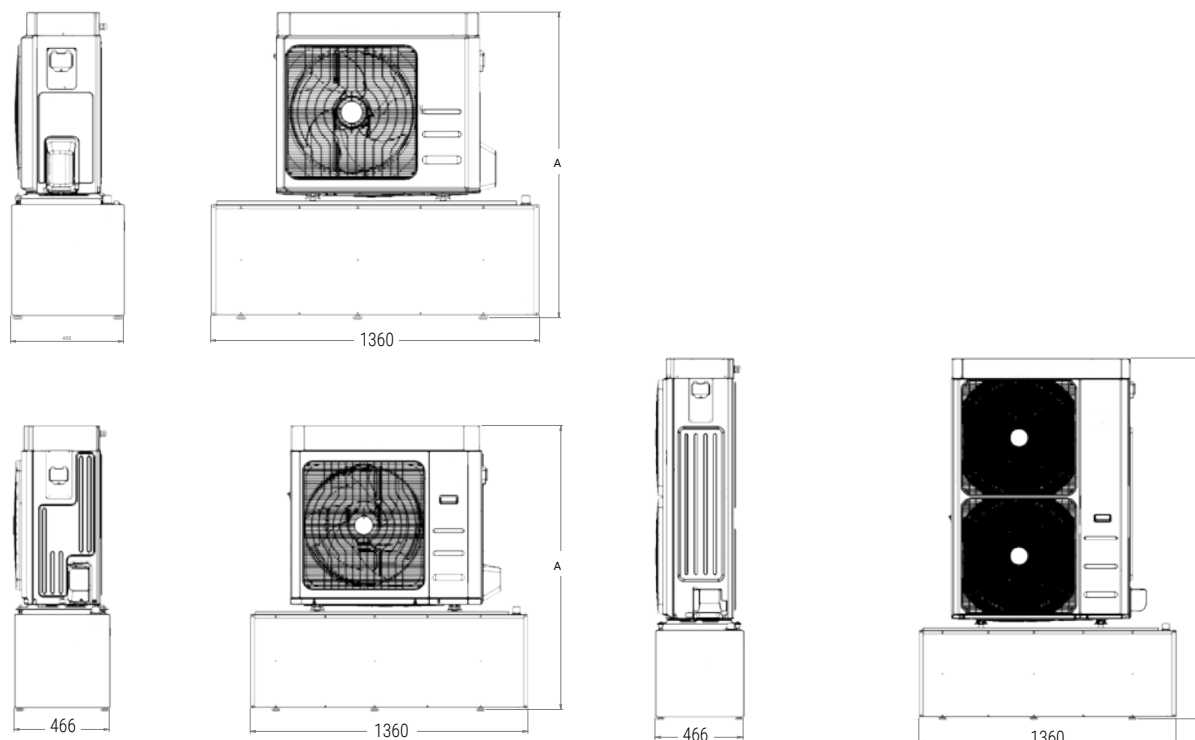
- Free standing horizontal inertial puffer with 50, 75 and 95 liters capacity.
- One encumbrance dimensions for all sizes.
- Solid hardware to support i-32V5 units
- Dampers between inertial puffer and heat pump as standard
- Insulation panel in polyester fiber of thickness 50 mm
- Finishing with Polyolefin-foam adhesive of 3 mm thick
- Possibility of installing and expansion tank 18 l (optional)
- Discharge valve included as standard
- N. 1 flexible for the connection of the inertial puffer to the heat pump as standard.
- Tank anti-corrosion painting .
- EDILFIBER insulation; new concept of thermal insulation, made of polyester fiber with the characteristic of being mainly produced from differentiated urban recycle waste (PET bottles collection) and therefore strongly respecting the environment.
- Metal sheets polyurethane powder painting
- Possibility of installing electric heaters from 1.2 (single phase) 2, 3 to 4.5 kW single and three-phase (optional).
- 18l expansion vessel (optional, factory installed).
- 2, 3, 4.5kW electrical heaters, available in single and three phases, managed as integration and/or replacement with double security level with automatic and manual reset thermostat to protect user and plant (optional, factory installed).
- Kit Exogel, mechanical valve saves machinery from freezing.



Electrical resistance  
(optional)



Insulating panel



Variation of the total height (A)  
as a function of the supporters regulation

Dimensions (A)		Min
<b>i-32V5 04-06-08</b>	mm	1270
<b>i-32V5 10-12</b>	mm	1.400
<b>i-32V5 14-14T-16-16T-18T</b>	mm	1.900

ACT		50	75	95
Useful capacity	L	50	75	95
Insulation thickness	mm		50	
Thermal conductivity coefficient	W/mK		0,04	
Max operating temperature	°C		95	
Max working pressure	bar		6	
Maximum test pressure	bar		3	
Empty weight	kg	60	65	69
Operating weight	kg	110	140	165
Dimensions	mm	1360x466x504 (527)		

### Exogel Kit - Frost protection

It protects the appliance and the plant from damage caused by an unexpected cooling of the working temperature of the technical water near the freezing point by evacuating the system.



### Loose accessories

**RE1.2M** 1.2 kW single phase electrical resistance  
**RE2.0M** 2 kW single phase electrical resistance  
**RE3.0M** 3 kW single phase electrical resistance  
**RE4.5M** 4.5 kW single phase electrical resistance  
**RE2.0T** 2 kW three-phase electrical resistance

**RE3.0T** 3 kW three-phase electrical resistance  
**RE4.0T** 4.0 kW three-phase electrical resistance  
**KIT EXOGEL** Frost protection  
**VE18AT** Expansion vessel 18 l

# ACT

## Outdoor water buffer for hot water and chilled water

90-120-170-220 L

The technical storage tank called ACT consists of a cylindrical tank in a horizontal position, available in four different capacities.

The tank is thermally insulated with polyurethane foam, so that it can operate with both hot and cold water. ACT is equipped with hydraulic connections positioned in such a way as to favour a homogeneous flow within the tank, allowing it to be used both as inertial in series and as hydraulic separation. The ACT storage tank constitutes a load-bearing system and is completed with RAL 7043 coloured panelling.

ACT includes both fastening hardware between the heat pump and the frame, and adjustable feet for levelling the assembly.

ACT is suitable for supporting various heat pump models: i-290 series from 0106 to 0127, i-32V5, i-32V5 Midi.

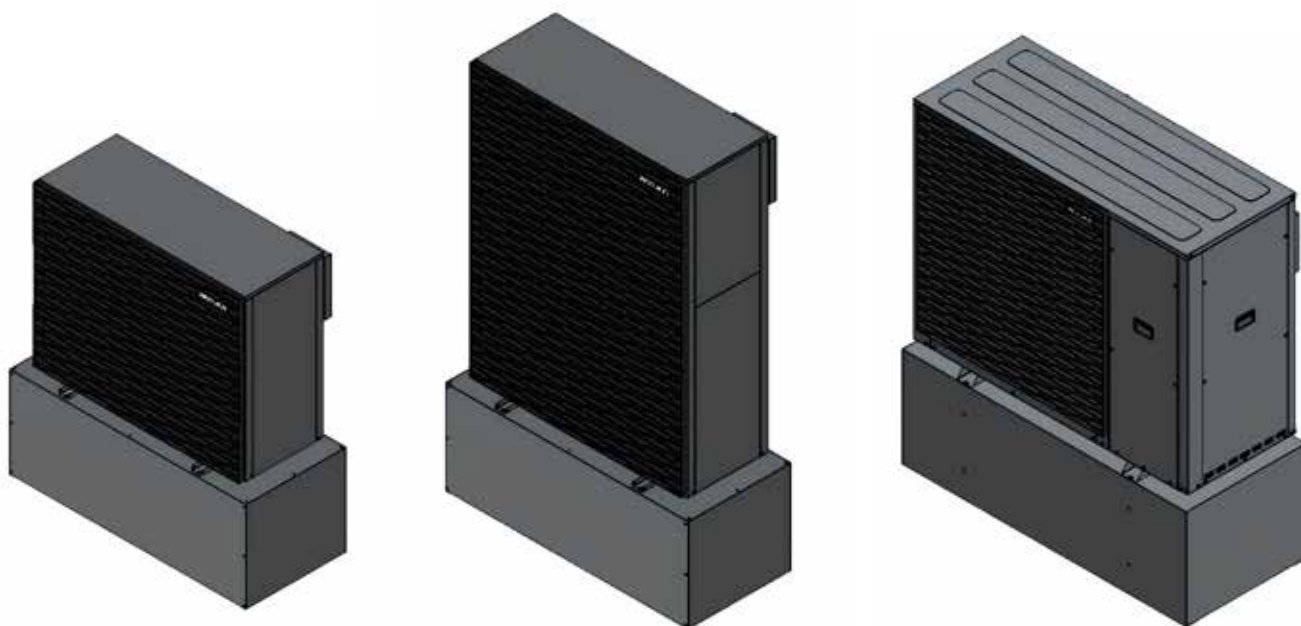
A number of accessories are available, such as: different sizes of electric heaters with their own electrical panel, expansion vessels and the EXOGEL valve.

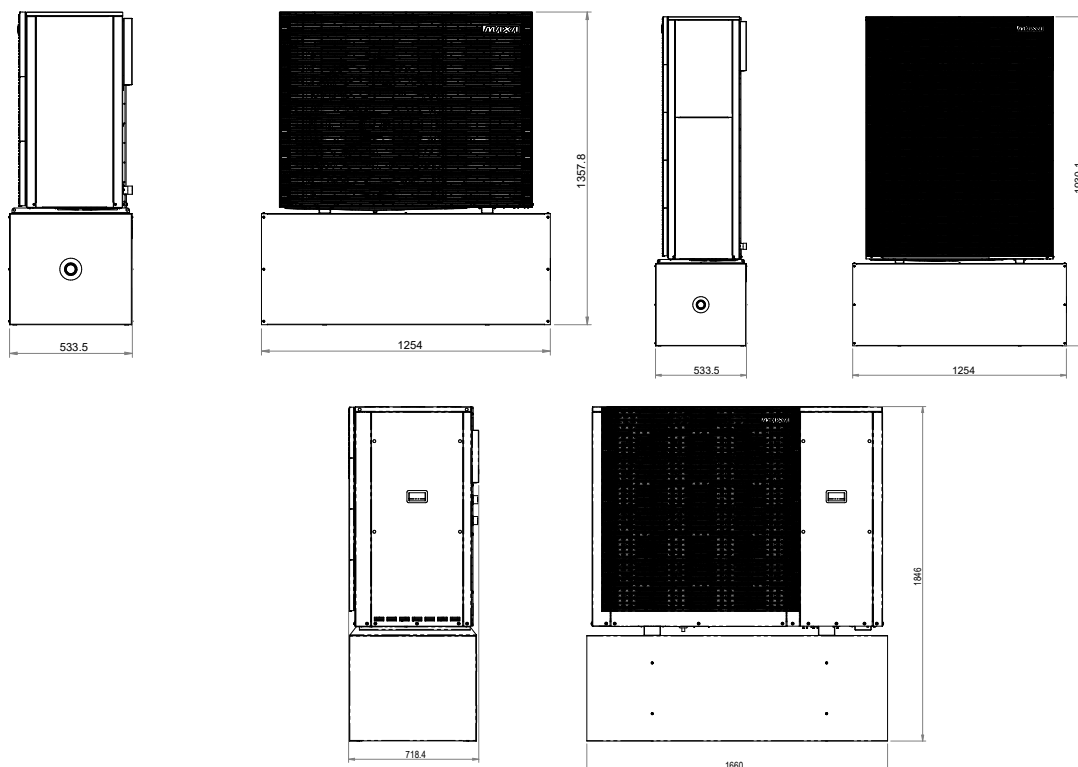


### Construction Features

- Inertial technical storage with capacities of 90, 120, 170, 220 litres.
- Compact dimensions with two different structures and sizes.
- Robust frame suitable for supporting different heat pump models: i-290 series from 0106 to 0127, i-32V5, i-32V5 Midi.
- Vibration dampers between ACT and heat pump (standard)
- Connecting fittings between ACT and heat pump (standard)
- Height adjustment feet (standard)
- Corrosion-proof finish of the storage tank
- Polyurethane foam insulation
- Water fill/drain tap.
- Several models of expansion vessels (optional, supplied separately).
- 5 models of additional single-phase and three-phase electric heaters (optional, supplied separately).
- Exogel kit, anti-freeze thermal drain valve, suitable for protecting systems without glycol inside the pipes (optional, supplied separately).

AVAILABLE FROM JUNE 2025





ACT		90	120	170	220
Useful capacity	L	90	120	170	220
Insulation thickness	mm	40	40	40	40
Thermal conductivity coefficient	W/mK	0,023	0,023	0,023	0,023
Max operating temperature	°C	95	95	95	95
Max working pressure	bar	3	3	3	3
Maximum test pressure	bar	6	6	6	6
Empty weight	kg	45	55	90	120
Operating weight	kg	135	175	260	340
Dimensions (LxHxP)	mm	1260x530x530	1260x530x530	1350x585x585	1660x585x702
<i>Expansion vessel volume (optional)</i>	L	7	7	12	15
Suggested matching		i-290 0106 i-32V5 06A ~ 18T A	i-290 0109 - 0112 i-32V5 Midi 0121 ~ 0132	i-290 0115 ~ 0123	i-290 0125 - 0127

### Exogel Kit - Frost protection

It protects the appliance and the plant from damage caused by an unexpected cooling of the working temperature of the technical water near the freezing point by evacuating the system.



### Loose accessories

<b>RE1.0M</b>	1.0 kW single phase electrical resistance
<b>RE2.0M</b>	2 kW single phase electrical resistance
<b>RE3.0M</b>	3 kW single phase electrical resistance
<b>RE4.0M</b>	4.0 kW single phase electrical resistance
<b>RE3.0T</b>	3 kW three-phase electrical resistance
<b>RE5.0T</b>	5.0 kW three-phase electrical resistance
<b>KIT EXOGEL</b>	Frost protection

<b>VE7AT</b>	Expansion vessel 7 l (ACT 90, 120)
<b>VE12AT</b>	Expansion vessel 12 l (ACT 170)
<b>VE15AT</b>	Expansion vessel 15 l (ACT 220)
<b>KF1</b>	Fixing Kit i-32V5 (06A ~ 18T A)
<b>KF2</b>	Fixing Kit i-290 (0106 ~ 0118)
<b>KF3</b>	Fixing Kit i-32V5 Midi (0121 ~ 0132), i-290 (0121 ~ 0127)